

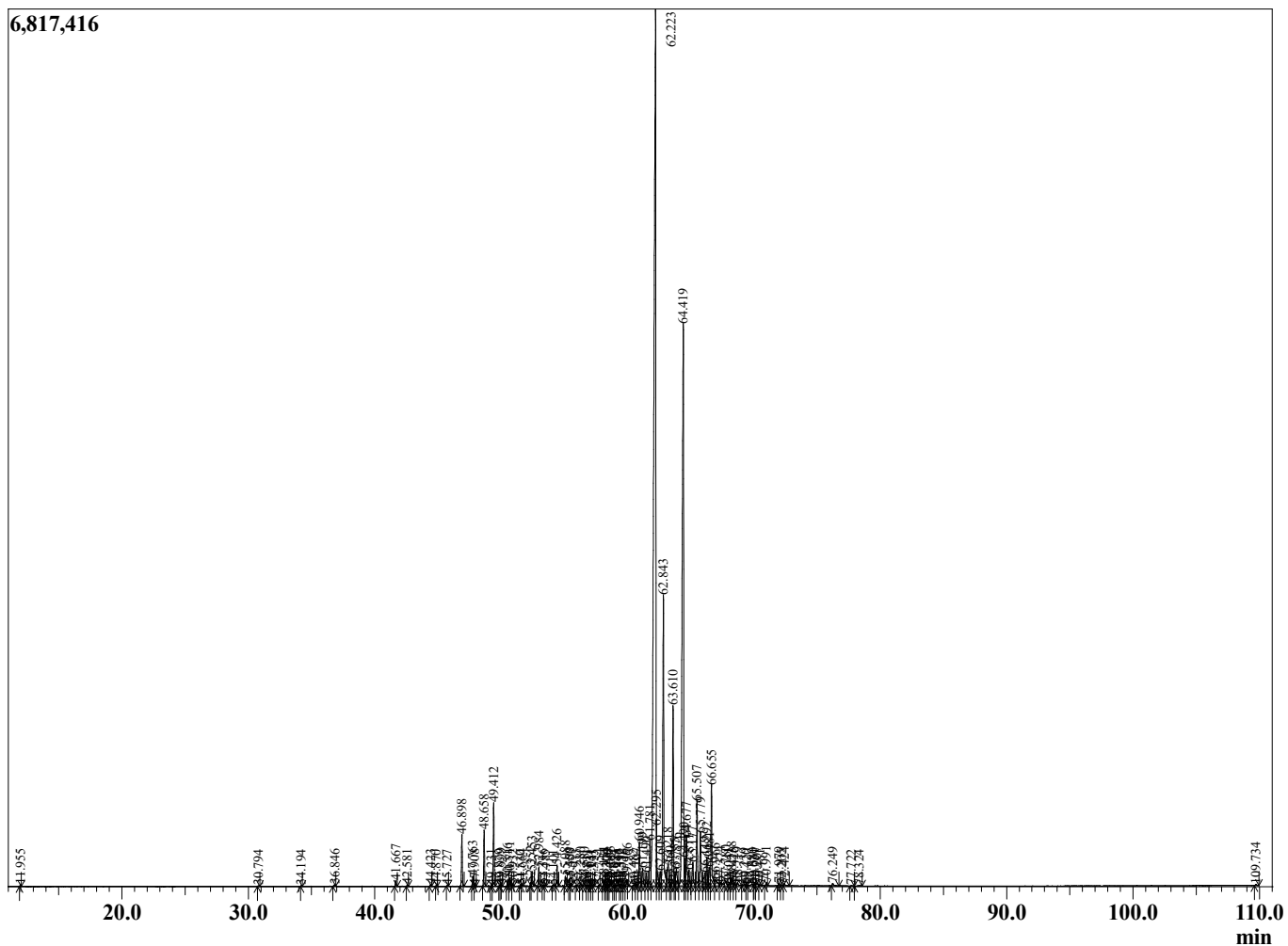
Sample Information

Sample Type : Essential Oil
 Sample Name : Santalum album
 Injection Volume : 0.10

Sandalwood
 Lot# IDW34-WC
 Country: India



Chromatogram Santalum album



Peak Report TIC

R.Time	Name	Area%
11.955	Santene	0.02
30.794	Furfuryl pyrrole	0.02
34.194	Unidentified	0.02
36.846	Unidentified	0.04
41.667	Unidentified	0.11
42.581	Unidentified	0.02
44.423	Unidentified	0.04
44.870	7-epi-Sesquithujene	0.02
45.727	nortricyclo-eka-Santalic acid	0.01
46.898	alpha-Santalene	1.05
47.763	trans-alpha-Bergamotene	0.19
47.908	Unidentified	0.02
48.658	epi-beta-Santalene	1.08
49.231	Unidentified	0.02
49.412	beta-Santalene	1.67
49.879	beta-Acoradiene	0.02
49.999	Unidentified	0.04
50.516	gamma-Curcumene	0.12
50.711	Ar-Curcumene	0.16
50.932	(Z,E)-alpha-Farnesene	0.03
51.510	Unidentified	0.02
51.664	tricyclo-eka-Santalic acid	0.04
52.352	beta-Bisabolene	0.06
52.453	beta-Curcumene	0.33
52.984	alpha-Teresantalic acid	0.38
53.336	Unidentified	0.03
53.485	(E)-gamma-Bisabolene	0.02
54.101	Unidentified	0.02
54.426	alpha-Ekasantalic acid	0.46
55.088	Santalic acid	0.21
55.450	Unidentified	0.04
55.503	Unidentified	0.04
55.933	Dendaralasin	0.01
56.280	Unidentified	0.07
56.580	Unidentified	0.06
56.811	Unidentified	0.02
57.031	Unidentified	0.04
57.141	Unidentified	0.02
57.335	Unidentified	0.01
57.754	Unidentified	0.02
58.131	Unidentified	0.09
58.304	Unidentified	0.03
58.370	Unidentified	0.03
58.495	Unidentified	0.02
58.633	Unidentified	0.09
58.894	Unidentified	0.01
59.023	Unidentified	0.02
59.316	Unidentified	0.06
59.392	Unidentified	0.03
59.532	Unidentified	0.04
59.716	Unidentified	0.04
59.966	alpha-Acorenol	0.18
60.482	Unidentified	0.01
60.707	Unidentified	0.04
60.946	Khusilal	1.06
61.199	(E)-alpha-Santalal	0.51

R.Time	Name	Area%
61.490	Unidentified	0.31
61.781	Unidentified	1.16
62.223	(Z)-alpha-Santalol	42.54
62.295	(Z)-alpha-Santalal	0.84
62.609	Unidentified	0.40
62.843	(Z)-alpha-trans-Bergamotol	7.54
63.218	(E)-alpha-Santalol	0.82
63.360	Unidentified	0.09
63.610	(Z)-epi-beta-Santalol	4.04
63.755	Unidentified	0.27
63.876	(Z)-alpha-trans-Bergamotol	0.60
64.419	(Z)-beta-Santalol	19.82
64.490	Unidentified	0.55
64.677	(Z)-Nuciferol	1.27
64.871	(E)-epi-beta-Santalol	0.46
65.177	Unidentified	0.70
65.507	(E)-beta-Santalol	1.89
65.779	Unidentified	1.60
66.119	(E)-alpha-trans-Bergamotol	0.49
66.292	(E)-Nuciferol	0.67
66.481	Unidentified	0.58
66.655	cis-Lanceol	2.49
66.966	Benzyl benzoate	0.40
67.374	Unidentified	0.12
67.780	Unidentified	0.20
68.041	Unidentified	0.06
68.238	Lanceol isomer	0.22
68.420	Unidentified	0.09
68.719	Unidentified	0.13
69.239	Unidentified	0.06
69.420	Unidentified	0.02
69.880	Unidentified	0.08
70.031	Unidentified	0.05
70.207	Unidentified	0.10
70.481	Unidentified	0.03
70.991	Unidentified	0.08
71.979	Unidentified	0.06
72.205	Unidentified	0.02
72.424	Unidentified	0.08
76.249	Unidentified	0.10
77.722	Unidentified	0.02
78.324	Unidentified	0.02
109.734	Unidentified	0.04
		100.00